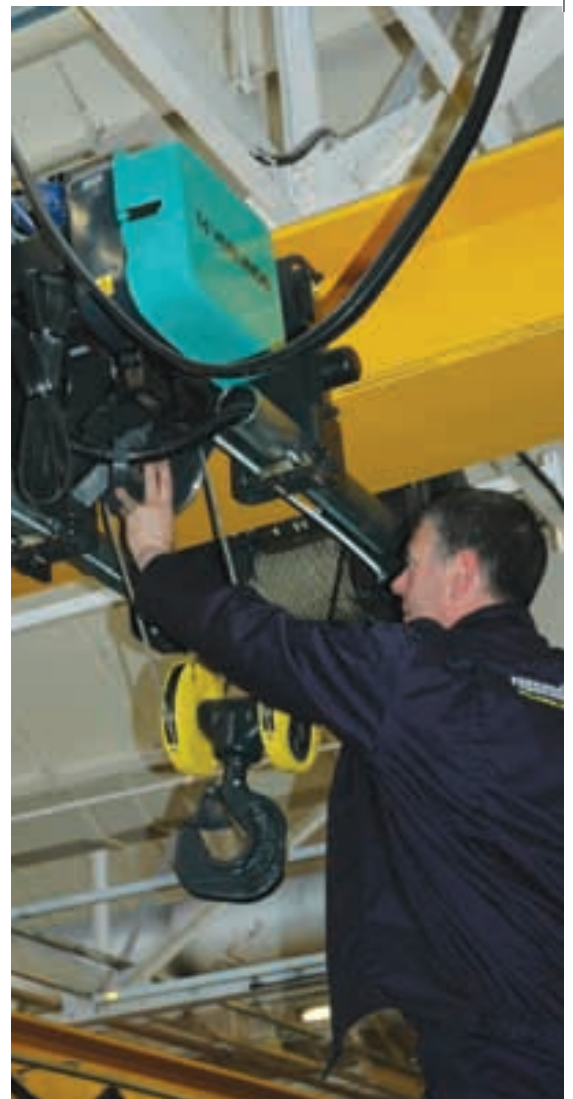




Examination and Testing
of Lifting Equipment
On-Site PDA Data Collection
Web Reporting and Analysis





Examination and Testing of Lifting Equipment – the Law

The law regarding the manufacture, safe use, maintenance, inspection and testing of lifting equipments varies from country to country, but in most regulatory regimes there is a requirement for –

- Periodic examination of lifting equipment; and
- Proof load testing of lifting equipment before first use.

For full details of international statutory requirements see our publication, 'RD177 Lifting Equipment and the Law', available at www.rossendalegroup.co.uk or from your Rossendale Group branch.

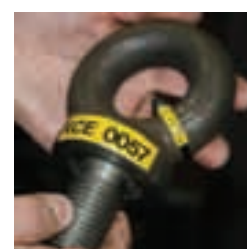


Lifting Equipment Examination and Testing Services

Rossendale Group offers a comprehensive lifting equipment examination and testing service. Lifting equipment can be examined or tested in our test houses or on site anywhere in the world.

- Examination and test engineers are LEEA qualified.
- Rossendale Group is a full LEEA member.
- Examination and test procedures and schemes are LEEA and ISO9001 approved.
- Certification is guaranteed to comply with the requirements of the legislation, standard or specification under which the examination or test is carried out.
- Rossendale Group examines and tests under LOLER, PUWER, ISO/IEC 17020, ASME B30.9, the Supply of Machinery (Safety) (Amendment) Regulations 1994 and the EC Machinery Directive 98/37/EC.
- Rossendale Group carries £1m PI insurance.

- Optional procedure approval, examination and test witness and certification stamp by Lloyd's Register, DNV or other third party.
- Optional colour coding at periodic examinations.
- Rossendale Group provides a full maintenance and repair back-up service for lifting tackle, lifting appliances and overhead cranes. Maintenance and service contracts are available. Full-time site inspection and maintenance engineers can be provided on long- or short-term contracts.



Examined items are clearly marked with ID No. and date next examination due.

Sitedesk

Safelift Sitedesk is an electronic system for the collection of lifting equipment inspection, examination and test data and for the presentation of reports on the web. Safelift Sitedesk is a leap forward for all concerned with lifting safety and lifting equipment management.

Rossendale Group Examiner

makes report on PDA on site



The report is sent by mobile or wireless network

Rossendale Group Examination Supervisor

receives and verifies the report on the office computer



Customer

logs on to web site by secure user name and password and views, manages and prints reports



The verified report is sent to www.rossendalegroup.co.uk



Benefits

- The examiner spends less time writing reports – more time examining the equipment!
- Data input errors are reduced and paperwork eliminated!
- Clerical time to create reports and certificates is reduced to zero!
- Examination reports are available on the web (or by email or CD) instantly following the examination!
- Examination reports can be viewed from anywhere, 24/7.
- Sitedesk reports items due for examination and items missing examination!
- Full defect reports include a photograph of the defective equipment!
- Clients are provided with a full inspection history through an easy to use web interface!

How it works

- The examiner captures the inspection report using a purpose designed handheld device loaded with Sitedesk software and the customer's equipment records.
- The inspection report is easily uploaded to our office PC using existing mobile or wireless networks.
- The inspection report is reviewed and approved by the examiner's supervisor.
- The inspection report is published to our web site in PDF non-tamper-proof format to which clients have sole access via individual user name and password.
- Alternatively inspection reports are automatically sent to the client via email or CD.

Further features

- The handheld device can be used to identify a piece of lifting equipment under examination by manual entry of the description or ID No. or by bar-code or RFID (Radio Frequency Identification).
- Reports available to the client include –
 - 'Passed' equipment with pass dates.
 - 'Failed' equipment with fail dates.
 - Equipment due for examination with due dates.
 - Equipment which has missed a due examination.
- A full history of examinations for each piece of equipment held.
- Examination reports can be viewed on screen, printed or emailed in PDF format.
- With bar-code identified equipment, using software downloaded onto a mobile phone, the client can photograph an item of lifting equipment and receive an immediate, up-to-date report on the examination status of that equipment.

E sales@rossendalegroup.co.uk
 W www.rossendalegroup.co.uk

Rossendale Group
 Portside North
 Merseyton Road
 Ellesmere Port
 CH65 2HQ
 UK

Rossendale Group
 Carr's Testing Works
 Commerce Street
 Haslingden
 Lancashire
 BB4 5JT
 UK

Rossendale Group
 Roman Way
 Gateway Park
 South Hykeham
 Lincoln
 LN6 9UH
 UK

Rossendale Group
 Unit 14
 Bamford Business Park
 Whitehill Ind Est
 Stockport
 SK4 1PL
 UK

T +44 (0)151 355 5091
 F +44 (0)151 357 2108

T +44 (0)1706 213577
 F +44 (0)1706 232029

T +44 (0)1522 693423
 F +44 (0)1522 693988

T +44 (0)161 429 0737
 F +44 (0)161 476 3315

